



2022 CATALOGUE



*Axos*

ALTO & TENOR



Henri SELMER Paris  
Designer and manufacturer of wind instruments and mouthpieces since 1885

[selmer.fr](http://selmer.fr)



# — TABLE OF CONTENTS —



## 4

### MAISON SELMER

- Our mission 4
- Our workshops 6



## 8

### THE SAXOPHONES

- Sopranino 10
- Soprano 11
- Alto 13
- Tenor 20
- Baritone 25
- Bass 27



## 30

### THE CLARINETS

- Eb 32
- Bb 33
- Bb/A 34
- Bassett horn 39
- Alto 40
- Bass 41
- Contralto 43
- Contrabass 44



## 46

### THE MOUTHPIECES

- For saxophone 50
- For clarinet 52

# Maison Selmer

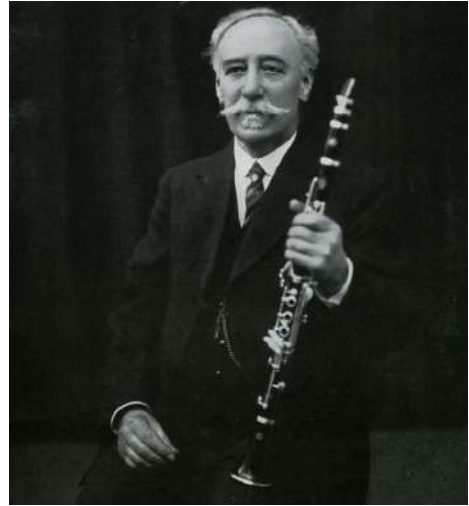
## OUR MISSION

Henri Selmer Paris has been the world's leading saxophone and clarinet manufacturer for more than a century, accompanying music lovers around the world with legendary models that have shaped the sound of several generations of musicians.

Founded in 1885 in the Montmartre district of Paris by clarinetist Henri Selmer, the brand relies on the expertise of musicians to design, innovate and improve its range of instruments.

Henri SELMER Paris also owes its success to the precious know-how perpetuated in its workshops in Mantes-la-Ville, where all the instruments have been made for over a century.

At the service of instrumentalists, Henri SELMER Paris aspires to liberate the creative spirit of all musicians, whatever their musical genres and requirements.



Henri Selmer, fondateur de la Maison

A stylized signature of H. Selmer in a cursive script, underlined.

## *Instruments of exception made* **WITH MUSICIANS FOR MUSICIENS**

Since Henri SELMER, a renowned clarinetist himself, the role of the musicians designers is highly essential to the development of Henri SELMER Paris instruments.

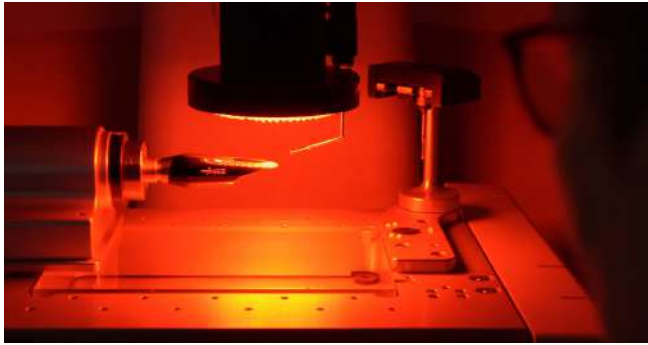
Before leaving our workshops, our instruments are individually tested and certified by our professional musicians certifiers.

Last but not least, the history of the Henri SELMER Paris House would not have been the same without the trust of all the musicians who, for more than a century, make our instruments resonate all over the world.





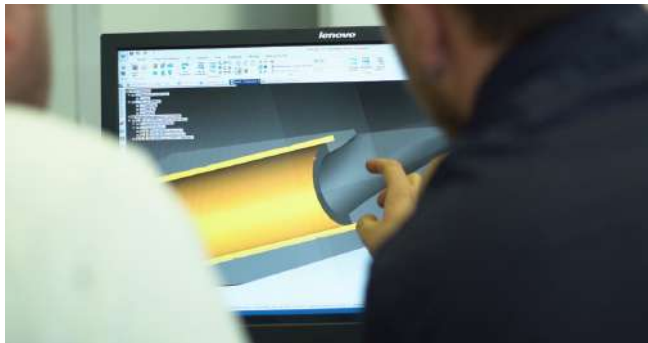
# Research and development INNOVATION AT THE SERVICE OF TRADITION



“Without getting tired, always do better” was the motto displayed by Henri SELMER.

Since his first gold medal clarinet at the Universal Exhibition in Saint-Louis (USA), the founder has left his mark on a culture of permanent research in favour of the musician.

Henri SELMER Paris integrates this approach on a daily basis in its workshops, in search of perfection for its instruments, from an acoustic, mechanic, ergonomic and aesthetic point of view.



## Recognition and commitment OUR LABELS



Labelled as *Entreprise du Patrimoine Vivant*, Henri SELMER Paris is recognized for its mastery of rare and traditional skills.

In June 2019, Henri SELMER Paris joins the *Comité COLBERT*, joining the most beautiful French prestige Maisons (Cartier, Bugatti, Christofle, Louis Vuitton, Longchamp, Baccarat...) working for the worldwide influence of a French art de vivre.

In December 2019, Henri SELMER Paris is the recipient of the *Excellence Française* prize, alongside Musée du Louvre, Lenôtre, the Philharmonie de Paris, the Garde Républicaine... Founded in 2019, this award honors those who, through their creativity and capacity for innovation, contribute to France's influence in the world.

In 2018, the *Comité des Victoires du Jazz* awarded its special prize to Henri SELMER Paris, recognizing for the first time the leading role of an instrument maker for its contribution to Jazz.

As a member of the *French Fab* program of Bpi France, Henri SELMER Paris shows its willingness to project itself into the future by committing itself to grow, innovate and digitalize, develop internationally and aim for ecological and environmental performance.

# Our Workshops

*Iconic*

## PLACES

Henri SELMER opened his first workshop in 1885, Place Dancourt, in the Montmartre district (Paris). Then it will be Gaillon (Eure), rue Myrha (Paris) and of course Mantes-la-Ville, which has been hosting our production workshops since 1919. At the time, they were selected for their proximity to the Seine (to facilitate the transport of goods) and to Paris (to keep in touch with the musicians).



*At the heart of our history...*

## WOMEN AND MEN



Outstanding entrepreneurial and family adventure, the success of Henri SELMER Paris instruments would not have been possible without the passion of these craftsmen who have passed on this special know-how from generation to generation.



## *More than 100 crafts* **RECRUITMENT AND TRAINING**



Designer and manufacturer of high-end since 1885, Maison SELMER is regularly looking for multi-faceted talents in order to share our history and grow together.

Our craftspeople receive a comprehensive training in our crafts: rigour, tenacity and meticulousness are the skills that will enable them to ensure quality work, to learn and apply operating procedures in a technological craftsmanship environment.

## *A subtle alchemy* **THE ALLIANCE OF NOBLES MATERIALS**

Mastering the elements is delicate: the fire will give shape to the saxophone under the flame of the boilermaker, the air will allow the drying of the wood giving it resistance and acoustic performance... but above all it must be channelled with precision to offer the best sound to the instrument.

Brass for saxophones, ebony or rosewood for clarinets for clarinets, but also leather, mother-of-pearl, cork... The materials we use have been selected for their acoustic, durability and aesthetic characteristics.



*460*  
**EMPLOYEES**

*137*  
**YEARS  
OF EXISTENCE**

*615*  
**MUSICIAN  
AMBASSADORS**







# Saxophones

## THE UNIVERSAL REFERENCE

The SELMER name is above all associated with the saxophone, which represents more than half of our activity.

Since the release of the Model 22 in December 1921, each new model, from the Cigar Cutter to the Mark VI, including the Super Action and the Balanced Action, has highlighted the innovative strength of the Henri SELMER Paris company.

The contributions of the greatest names in jazz and classical and contemporary saxophone, from John Coltrane and Marcel Mule to Kenny Garrett and Claude Delangle, have gradually enriched the SELMER saxophone.

Thanks to its long experience as a wind instrument manufacturer and its deep knowledge of the world of the saxophone, Henri SELMER Paris has imposed a sound which has become THE reference worldwide.

	<i>Axos</i>	<i>80</i> <i>Super Action</i> SERIE II	SERIE III	<i>Reference</i>	SUPRÊME
Sopranino		○			
Soprano		○	○		
Alto	○	○	○	○	○
Tenor	○	○	○	○	
Baritone		○	○		
Bass		○			

*Sopranino Saxophone*

## **SUPER ACTION 80 SERIE II**

*A great precision of play, a rich and full tone*

The E-flat sopranino saxophone is a very delicate instrument with respect to both its playing approach as well as its making. It is the highest voice in the saxophone family and is increasingly used in all musical genres.

The Henri SELMER Paris Super Action 80 Serie II sopranino features good overall blowing and attractive timbre: despite its high pitch, it has a warm sound that is very close to the E-flat alto. It fully fits into the Super Action 80 Serie II spirit, while asserting a real personality.

Available:



Lacquered



Silver plated

### **TECHNICAL FEATURES**

Key: Eb

Ambitus : from low Bb grave to high F#

Pads: leather with metal resonator with rivet

Thumb rests: left hand and right hand (adjustable), in synthetic material

Included : Sopranino S80 C\* mouthpiece with ligature and cap, neck strap, swab, cork grease, Light Sopranino case.





*Soprano Saxophone*

## **SUPER ACTION 80 SERIE II**

*A rich and full tone with a direct emission*

The Bb Henri SELMER Paris Super Action 80 Serie II soprano is perfectly in line with the “historical” soprano: light, flexible, with a very round sound, while offering an improved ease of playing.

A beautifully toned instrument, rich in high harmonics, it has excellent projection power.

Its design (a one-piece tube) ensures great playing stability.

Available:



Lacquered



Silver  
plated



Black

### **TECHNICAL FEATURES**

Key: Bb

Acoustics: high F# key

Needle springs: blued steel

Thumb rests: left hand and right hand (adjustable), in synthetic material

Pads: leather with metal resonator with rivet

Included: Soprano S80 C\* mouthpiece with ligature and cap, neck strap, swab, cork grease, Light Soprano case.



# Soprano Saxophone

## SERIE III

*The saxophone that makes the soprano more accessible, more accurate and more comfortable*

The Serie III line offers instruments with precision of the different playing parameters.

Incorporating the latest advances from Henri SELMER Paris, the Serie III saxophone range pushes the limits of the instrument in terms of accuracy of emission and ergonomic comfort.

Set up with the same concern for versatility of use, it is suitable for musicians from different worlds and is characterized by a great flexibility.

The Henri SELMER Paris Serie III soprano offers an easy round sound and a smooth, warm tone with a rich timbre without aggressivity particularly in the upper register (*altissimo*), a very consistent and stable pitch and an expanded range through its high G key.

Its ergonomics offers a comfort of play quite similar to that of the alto, increased by the possible choice between two removable necks, one straight one curved, allowing an alternative in term of playing position and sound.

Available:



Lacquered



Silver plated



Black



Brushed



Solid silver



Gold plated

### TECHNICAL FEATURES

Key: Bb

Ambitus : from low Bb to G

Pads: leather with metal resonator

Thumb rests : left hand and right hand (adjustable) in metal

Included : 2 removable necks (straight and curved), S80 C\* Soprano mouthpiece with ligature and cap, neck strap, swab, cork grease, Light Soprano case.





*Alto Saxophone*

**AXOS**

*Timbre and roundness with ease*

The Axos perpetuates the tradition of craftsmanship by integrating new more industrial processes. It carries the acoustic DNA common to all our models.

Since its release in 2015, the Axos alto is the ideal instrument for musicians who want to purchase a professional saxophone at a more affordable price.

Many students, amateurs and also professionals have and professionals have adopted it. In order to make the instrument accessibility to the largest public, it offers a great comfort of play guaranteed by an adapted keywork and a great mechanical reliability.

On the occasion of its fifth anniversary, the Axos alto has been given a special lacquer with a warm color similar to that of the other models.

The “second generation” Axos also has a specific floral engraving for a high quality alto.

Available:



Lacquered

## TECHNICAL FEATURES

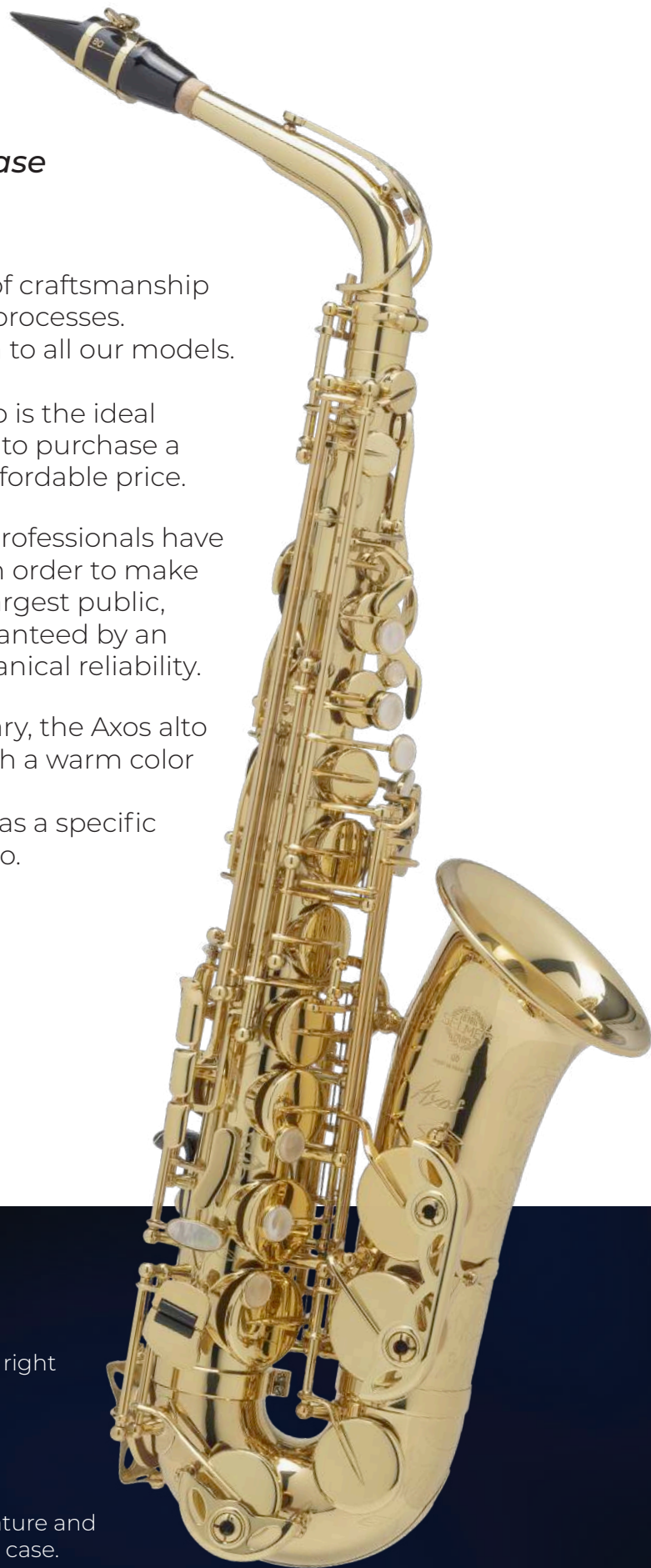
Key: Eb

Thumb rests: left hand (synthetic material), right hand (adjustable, synthetic material)

Pads: with metal resonators

Finish: special Axos colourless lacquer

Included: S80 C\* Alto mouthpiece, with ligature and cap, neck strap, swab, cork grease, Axos alto case.



*Alto Saxophone*

## **SUPER ACTION 80 SERIE II**

*The most versatile instrument*

The Super Action 80 Serie II alto is without doubt the world's most popular professional alto saxophone.

It has been manufactured in the Henri SELMER Paris workshops since 1986, making it our longest-lasting model. It has definitely helped shape the sound, the playing, the personality of several generations of saxophonists in the world.

The Super Action 80 Serie II (SA80 SII), an evolution of the Super Action 80 (SA80), marked a return to the spirit of the of the historical saxophone, which built the identity and made the success of the Henri SELMER Paris saxophone: an open sound, harmonically rich and an excellent power of projection make it a particularly versatile instrument.

Available:



Lacquered



Silver  
plated



Black



Brushed



Gold  
plated

### **TECHNICAL FEATURES**

Key: Eb

Ambitus: from low Bb to high F#

Keywork: lacquered brass

Thumb rests: left hand and right hand (adjustable)  
in synthetic material

Pads : leather with metal resonators

Included: S80 C\* alto mouthpiece with ligature and cap,  
neck strap, swab, cork grease, Light Alto case.





# *Alto Saxophone*

## **SERIE III**

*A great precision in playing  
with a rich and powerful tone*

The Series III alto saxophone is part of the “Selmer sound” tradition: open and centred, it offers the musician pure playing pleasure. Capable of responding to the slightest inflection of breath, it allows each person the chance to express oneself in complete freedom.

Perfectly balanced overall tuning (octave ratios) and a remarkably staged upper register, with the double C sharp mechanism, are compelling features of the «Series III». Its acoustic, mechanical and ergonomic qualities make it a first-class instrument, one that is superbly suited to the needs and uses of our time.

Available:



Lacquered



Silver  
plated



Black



Brushed



Solid  
silver



Gold  
plated

### **TECHNICAL FEATURES**

Key : Eb

Ambitus : from low Bb to high Fa#

Keywork : lacquered brass

Double C# automatic mechanism

Thumb rests : left hand and right hand (adjustable)  
in synthetic material

Pads : leather with metal resonator with rivet

Included : Alto S80 C\* mouthpiece with ligature and cap,  
neck strap, swab, cork grease, Light Alto case.





# Saxophone Alto

## REFERENCE

*A warm sound, a generous tone  
and a great projection*

The Reference 54 alto came out of the Henri Selmer Paris workshops, almost 50 years after the famous Mark VI model, to which it refers and pays homage.

Its sound is wide, powerful, timbred and generous, notably due to the larger volume of its bell.

Very largely inspired by the ergonomics of the Mark VI, even reproducing the design of certain keys, one experiences the same sensations when playing the Reference saxophone as those felt on a Mark VI. Its ergonomics are compact, close to the tube. Its specific engraving also evokes that of the old saxophones.

The Reference alto realizes the ambitious project of marrying the vintage spirit of the saxophone with a modern construction guaranteeing greater precision and reliability of manufacture than its historical model.

Available:



Lacquered



Antiqued  
lacquer

### TECHNICAL FEATURES

Key : Eb

Ambitus : from low Bb to high Fa#

Keywork : lacquered brass

Double C# automatic mechanism

Thumb rests: left hand and right hand (adjustable)  
in synthetic material

Pads: leather with metal resonator with rivet

Included: Alto S80 C\* mouthpiece with ligature and cap,  
neck strap, swab, cork grease, Light Alto case.



# Alto Saxophone

## SUPREME

*Beyond musical genres, the enjoyment and evidence of playing*

The creation of the Supreme embodies the culmination of one century of expertise, combined with a perfectly mastered manufacturing process that lives up to the ambitions of the SELMER company.

The Supreme is characterized by a perfectly balanced tuning, infinite sound colors, and a great ease of response. It hides the natural and inherent constraints of the saxophone - the playing limitations are non-existent. Its roundness and projection capacity make it an instrument that is both traditional and resolutely modern. The refinement and care taken in its manufacture, as well as its entirely corrected ergonomics, reveal an enjoyment and evidence of playing that has never been seen before.

Available:



Lacquered



Silver  
plated



Black



Brushed



Solid  
silver



Gold  
plated



Antiqued  
lacquer

### TECHNICAL FEATURES

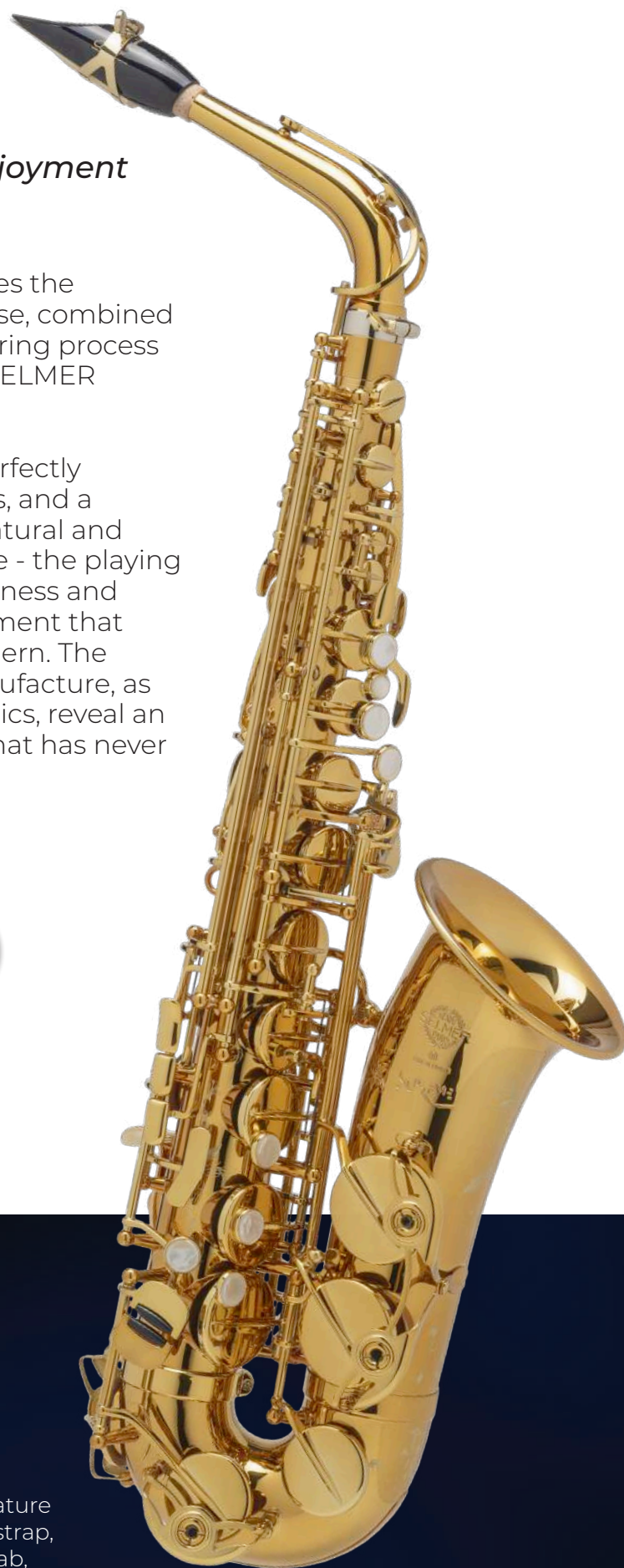
Key: Eb

Range: low Bb to high F#

Pads: leather with rivetless metal resonators

Thumb rests: metal

Included: Concept alto mouthpiece (with ligature and cap), alto Supreme case, Supreme neck strap, silk/microfibre cloth, body swab and neck swab, cork grease.





*Alto Saxophone*

## **SUPREME "MODÈLE 2022"**

*A limited edition to celebrate 100 years  
of SELMER saxophones*

The Supreme alto "Modèle 2022" celebrates the 100<sup>th</sup> anniversary of the first saxophone to be manufactured in the Henri SELMER Paris workshops in 1922.

The sound of the Supreme is the result of a perfect balance between roundness combined with an immense richness of timbre, an ideally distributed accuracy, an ease and a flexibility of play that is unheard of and a great power of projection.

Produced in a limited series of 641 pieces, this new version of the Supreme alto benefits from the same acoustic, mechanical and ergonomic qualities, but is distinguished by a specific, innovative and creative design.

Its exclusive matte dark gold finish is highlighted by the contrast of a palette of blacks on the guards, the body-to-bell grenadilla wood medallion, the pads and the mother-of-pearls. The patterns of its engraving, resolutely Art Déco, evoke the Paris of the Roaring Twenties, that saw the birth of the first SELMER saxophone.

Available:



Matte gold lacquer

### **TECHNICAL FEATURES**

Key: Eb

Ambitus : from low Bb to high Fa#

Guards and octave key: matte black chromed

Pads: black leather, rivetless

Thumb rests: left hand and right hand (adjustable)  
in synthetic material

Finish: matte dark gold lacquer

Included : Concept alto mouthpiece, matte black ligature cap, "Modèle 2022" alto case, grenadilla plug with lacquered brass ring engraved "Modèle 2022", Supreme neck strap, silk/microfibre cloth, body swab, neck swab, cork grease.







ALTO SAXOPHONE

SUPRÊME

*Modèle 2022*

LIMITED EDITION  
100<sup>th</sup> ANNIVERSARY





*Tenor Saxophone*

**AXOS**

*The perfect match of timbre and roundness*

Designed and manufactured in our workshops in Mantes-la-Ville, the care taken in the manufacture of the Axos tenor by our craftsmen shows the same level of demand and know-how as its predecessors.

As an entry-level professional saxophone, it has the same qualities of great flexibility, accuracy and projection.

Its great ease of playing and rich timbre make it an ideal instrument to “tame” the tenor, whatever the level of playing.

The simplified neck fitting and the special pads amplify this ease of response. The fingers rest naturally on its strong, durable, and ergonomically comfortable keywork.

The warm lacquer shade and the finesse of its engraving are the hallmarks of a great tenor.

Available:



Lacquered

## TECHNICAL FEATURES

Key: Bb

Ambitus: from low Bb to high F#

Pads: leather with metal resonators

Thumb rests: left hand and right hand (adjustable) in synthetic material

Finish: exclusive Axos gold lacquer

Included: S80 C\* Tenor mouthpiece with ligature and cap, neck strap, swab, cork grease, Tenor Axos case.





*Tenor Saxophone*

## **SUPER ACTION 80 SERIE II**

*The oldest of our tenors  
with a very distinctive and powerful tone*

The Super Action 80 Serie II tenor was released in 1986. This makes it the longest lasting tenor in the catalogue.

Its neck, with a very pronounced angulation, gives it a very specific timbre, a very particular grain of sound, very recognizable, with much character.

This specific angulation also determines a playing position, specific to this model.  
This geometry allows a great finesse of sound while having a great capacity of projection.

A tenor that you must get to discover all its qualities.

Available:



Lacquered



Silver  
plated



Black



Brushed



Gold  
plated

### **TECHNICAL FEATURES**

Key: Bb

Ambitus: from low Bb to high F#

Thumb rests: left hand and right hand (adjustable)  
in synthetic material

Pads: leather with metal resonator with rivet

Included: S80 C\* Tenor mouthpiece mouthpiece with ligature and cap,  
neck strap, swab, cork grease, Light Tenor case.



# Tenor Saxophone

## SERIE III

*An outstanding flexibility which allows to easily shape one's own sound*

The Serie III tenor has been manufactured in the Henri Selmer Paris workshop in Mantes-la-Ville since 1997. It integrates many qualities of the previous models.

Its main characteristic is its immense playing flexibility, significantly reducing the difficulties caused by the natural inertia of the tenor.

True to the spirit of the Serie III family, this tenor is an easier instrument to play, which allows the saxophonist to "find" and develop his own sound more quickly. It is enjoyable to play, with a generous low register and easy subtones.

Excellent response, amazing accuracy and balanced ergonomics create a close relationship between the musician and the instrument.

Available:



Lacquered



Silver  
plated



Black



Brushed



Solid  
silver



Gold  
plated

### TECHNICAL FEATURES

Key: Bb

Ambitus: from low Bb to high F#

Thumb rests: left hand and right hand (adjustable)  
in synthetic material

Pads: leather with metal resonator

Included: S80 C\* Tenor mouthpiece with ligature and  
cap, neck strap, swab, cork grease, Light Tenor case.





*Tenor Saxophone*

## REFERENCE 36

*A warm and open sound*

The Reference model is available in two versions for tenor (36 and 54).

The tenor Reference 36 has the ambitious goal of reproducing the playing sensation close to the mythical Balanced Action model produced from 1936 to 1954.

The opening diameters of the neck and the bore at the bell/bow connection are larger.

It is a tenor with a more generous volume, which allows a great projection, while keeping a roundness of sound accentuated by plastic resonators on the pads.

It has the same ergonomic comfort as the Reference 54, suitable for all hands.

Slightly less easy to tame than the Reference 54, it offers a constant possibility of development and renewal.

Available:



Lacquered



Antiqued  
lacquer

### TECHNICAL FEATURES

Key: Bb

Ambitus: from low Bb to high F#

Thumb rests: left hand and right hand (adjustable)  
in synthetic material

Pads: leather with plastic booster

Included: Concept Tenor mouthpiece with ligature and cap, neck strap, swab, cork grease, Tenor Reference case.



*Tenor Saxophone*

## REFERENCE 54

*A centered sound and a great richness of timbre*

The Reference model is available in two versions for tenor (36 and 54).

The Reference 54 tenor has the ambitious goal of reproducing the playability of the legendary Mark VI model produced from 1954 to 1974.

A great flexibility, an almost infinite variety of timbres, a very centered and at the same time very malleable sound.

A roundness of sound accentuated by plastic resonators on the pads. A saxophone whose main quality is to adapt to all profiles of saxophonists, whatever their style or level.

The Reference model goes as far as reproducing the design of some of the keys of the famous Mark VI model, which offers ergonomics made for the largest number.

Available:



Lacquered



Antiqued  
lacquer

### TECHNICAL FEATURES

Key: Bb

Ambitus: from low Bb to high F#

Thumb rests: left hand and right hand (adjustable)  
in synthetic material

Pads: leather with plastic booster

Included: Concept Tenor mouthpiece with ligature and cap, neck strap, swab, cork grease, Tenor Reference case.





# *Baritone Saxophone*

## **SUPER ACTION 80 SERIE II**

*A warm and smooth tone*

The baritone Super Action 80 Serie II offers an excellent homogeneity of sound over the whole register, with no break between the low and high register.

It develops a particularly warm and smooth tone, thus sublimating the characteristics of this instrument.

Available:



Lacquered



Silver  
plated



Black



Brushed

### **TECHNICAL FEATURES**

Key: Eb

Ambitus: from low Bb to high F#

Thumb rests: left hand and right hand (adjustable) in synthetic material

Pads: leather with metal resonator with rivet

Accessory: waterkey on the upper arm

Included: S80 C\* Baritone mouthpiece with ligature and cap, neck strap, swab, cork grease, Fligh case.



# Baritone Saxophone

## SERIE III

*The most versatile and highly advanced*

The Serie III baritone is a very timbred instrument, rich in harmonics, homogeneous over the entire range with very fluid register changes.

This instrument, with its warm sound, develops a centered, flexible and fine sound which adapts to all types of repertoire, in the line of the Serie III. An instrument with character.

Its perfectly studied ergonomics gives an impression of immense lightness unique to the baritone. A great deal of work has been done to reduce its weight, which contributes to this feeling of easy handling of the Serie III baritone.

Available:



Lacquered



Silver  
plated



Black



Brushed

### TECHNICAL FEATURES

Key: Eb

Ambitus: from low A to high F#

Thumb rests: left hand and right hand (adjustable) in metal

Weight: 5.60 kg

Waterkey: on the upper arm

Pads: leather with metal resonator

Included: S80 C\* Baritone mouthpiece with ligature and cap, neck strap, swab, cork grease, Flight case.





*Bass Saxophone*

## **SUPER ACTION 80 SERIE II**

*The world reference  
for extreme ranges*

The bass saxophone is a rare and demanding instrument.

In the evolution of repertoires, instruments of extreme range are increasingly used.

The Henri SELMER Paris Super Action 80, Serie II bass saxophone is particularly suited to this new trend: its design and acoustic characteristics allow it to be no longer essentially a “support” instrument and to open up to a much more harmonic playing, just like another instrument of more “normal” range.

It offers a real technical virtuosity thanks to its optimised ergonomics.

Available:



Lacquered



Silver  
plated

### **TECHNICAL FEATURES**

Key: Bb

Ambitus: from low Bb to high F#

Waterkey: on the upper arm

Thumb rests: left hand in synthetic material and right hand (adjustable) in resin

Pads: leather with metal resonator with rivet

Included: S80 C\* Bass mouthpiece with ligature and cap, neck strap, swab, cork grease, non-slip adjustable peg, Light Bass case.





SUPRÊME

SAXOPHONE  
ALTO



Henri SELMER Paris  
Designer and manufacturer of wind instruments and mouthpieces since 1885

[selmer.fr](http://selmer.fr)





*Muse*

BB & A CLARINETS



Henri SELMER Paris  
Concepteur et fabricant  
d'instruments à vent  
et de becs depuis 1885

[selmer.fr](http://selmer.fr)







The word 'Clarinet' is written in a large, elegant, cursive script. The letters are interconnected, with a prominent loop at the start of the 'C'. The color is a light gold or yellow, contrasting with the dark blue background.

## **THE FOUNDING INSTRUMENT**

The clarinet was the first instrument developed by Henri SELMER, renowned clarinettist at the Orchestre de la Garde Républicaine and the Opéra Comique.

Thanks to the constant relationship maintained with generations of clarinettists of all cultures and all levels, the Henri SELMER Paris House is able to offer each artist an original choice adapted to his musical personality.

Located in Mantes-la-Ville (France) for a century, today our workshops are the only factory in the world with the know-how to manufacture the entire clarinet family.

*E♭ Clarinet*

## **RECITAL**

*Paramount in consistency and reliability*

An instrument for which the quality of the sound is paramount: round, consistent, without aggressiveness.

Its ergonomics are close to those of the B♭. The instrument plays very well in an orchestra, allowing to reach balanced dynamic levels with the other instruments of the section.

### **TECHNICAL FEATURES**

Key: E♭

Bore: diameter 13.5 mm

Pitch: 440-442 Hz

Delivered with 2 barrels: 43 mm and 45 mm

System: standard Boehm with E♭ lever

Thumb rest: adjustable

Materials: body, barrels and bell in grenadilla wood, keywork in silver plated nickel silver, leather pads

Weight: 0.545 kg

Included: Standard C85 E♭ mouthpiece with ligature and cap, Light E♭ case.





*Bb Clarinet*

## **PROLOGUE**

*The step-up instrument*

New model of Bb clarinet in ebony, The Prologue clarinet benefits from all the experience and engineering of Henri SELMER Paris in the design and manufacture of high quality clarinets, recognized worldwide.

Light and easy, the Prologue clarinet provides immediate comfort. Its ergonomic keywork, specially designed for clarinettists of all levels, ensures a natural and quick adaptation to the instrument. Its specific bore facilitates the emission of the sound, the flexibility on all registers and develops a great homogeneity on the whole range.

Our acoustic research has allowed us to optimise the tuning ratios, thus placing the Prologue to a remarkable level in its category.

The Prologue clarinet is available in Bb, with an optional Eb lever.

### **TECHNICAL FEATURES**

Key: Bb

Pitch: 440 - 442 Hz

Thumb rest: adjustable with ring

Pads: Valentino

Bell rim: high-strength elastomer

Finish: silver plated keys

Included: Focus mouthpiece with ligature and cap, Prologue case.



# Bb/A Clarinet

## PRÉSENCE

*The perfect match of timbre and roundness with ease!*

Thanks to its innovative bore design, this clarinet has unique acoustic qualities that provide ease of emission, exceptional homogeneity and above all an instrument that is easy to play.

The sound of the Présence clarinet is a mix of harmonic richness, and timbre; essential characteristics to the instrument.

Also, the research done on the position and size of the tone holes has given this clarinet unrivalled intonation. Specially designed keys, as well as new key orientations and positions, provide unmatched mechanical precision and response combined with playing comfort.

The grenadilla wood is selected, delicately worked, naturally treated, lacquered and waterproofed for a protection and finish at the top of its class.

### TECHNICAL FEATURES

Key: Bb and A

Universal pitch: 440 - 442 Hz

Barrel: 65.5 mm

Keywork: silver plated nickel silver or matte black

Optional: Eb lever

Pads: Valentino

Thumb rest: adjustable

Included : Concept mouthpiece, optional Focus mouthpiece, with ligature and cap, Présence case (single and double).





# *Bb/A Clarinet*

## **PRIVILÈGE**

*A new generation of clarinets*

Known for their great flexibility and stability, the clarinets Privilège are being refined in aesthetics, ergonomics and accuracy.

Redesigned keys, a new key orientation and improvement of the mechanical response make it easier for the clarinettist to adapt to the Privilège.

Exceptionally stable in pitch, perfectly adaptable to all acoustics (opera, symphony, harmony, room, studio) and get married easily with other instruments.

The medium register perfectly temperate (E, F, F, F#, G) wins in brightness and timbre making the Privilège clarinet an extremely consistent instrument over the whole range. Most of the notes do not require corrective fingerings to be accurate, nor even a correction key.

Raw ebony wood is selected, worked delicately, naturally treated, lacquered and waterproof for protection and a top-of-the-range finish, completed by fine engravings on keys and rings.

### **TECHNICAL FEATURES**

Key: Bb

Pitch: 440 - 442 Hz

Barrels: 64.5 and 65.5 mm (common to the A clarinet)

Keywork: silver plated or matte black

System: N° 1 standard Boehm (17 keys, 6 rings) with Eb lever/left hand

Rings: chromed brass or matte black

Thumb rest: adjustable

Pads: leather, Gore-Tex and cork

Tenons: metal sockets (male and female)

Included : Concept mouthpiece with ligature and cap.

PRISMe case (single and double).



# *Bb/A Clarinet*

## **RECITAL**

*A historic and atypical model*

A sophisticated bore, as well as the material, a specially selected and worked grenadilla wood, have made possible the genesis of a unique tone: noble and living matter, the wood itself gives the Recital this warm, rich and round tone, with an exceptional presence.

A lot of expressiveness in this clarinet which will seduce those who are looking for "a sound". An original design for an acoustic result of a rare quality.

The Recital clarinet has body dimensions 2mm larger (in diameter) than other models.

### **TECHNICAL FEATURES**

Key: Bb and A

Bore diameter: 14.35 mm

Pitch: 440-442 Hz

Delivered with 2 barrels : 62.5 mm and 64.5 mm

System: standard Boehm (17 keys, 6 rings) with Eb lever/left hand

Thumb rest: adjustable

Materials: body, barrels and bell in grenadilla wood, silver plated nickel silver keywork, leather pads

Included : Concept mouthpiece with ligature and cap, PRiSMe case (single and double).





# Bb/A Clarinet

## SIGNATURE

*The Henri Selmer's legendary Signature*

Signature is a unique and unrivalled concept.

Its tone is a fair compromise between roundness and presence as a subtle mix of smoothness and energy.

The wide dynamic range facilitates *pianissimo* and *fortissimo* without saturation, while maintaining a perfect homogeneity of colour.

A centred and easy emission provides a high level control.

The tuning is perfectly balanced thanks to its raised up toneholes.

### TECHNICAL FEATURES

Key: Bb and A

Pitch: 440 - 442 Hz

Delivered with 2 barrels: 62.5 mm and 64.5 mm

System: Boehm standard N°1 (17 keys, 6 rings) with Eb lever/left hand

Materials: body and bell in grenadilla wood, silver plated nickel silver keywork, adjustable thumb rest, white leather pads.

Included : Concept mouthpiece with ligature and cap, PRiSme case (single or double).



# Bb/A Clarinet

## MUSE

*Ease of response and creative freedom*

Ease of response, tone rich in harmonics, flexibility, reliability... Get inspired by Muse clarinets !

Designed to become the natural extension of your breath, the Bb and A Muse clarinets have been designed for musicians seeking instruments offering a very precise and direct response.

They offer a great ease of playing, an immediate vibration, a clear, colourful, warm tone. Their comfort and the design of the keywork allow for a very quick adaptation to the instrument.

The Muse clarinet's intonation has also been optimised, well calibrated with precise intervals. It has a great homogeneity in all registers and switching from note to note.

The EVOLUTION★ system has been integrated to the Muse clarinet. This innovation based on a new generation resin interior lining, providing better stability and longevity to the instrument, while preserving the acoustic qualities of the traditional wooden clarinets.

### TECHNICAL FEATURES

Key: Bb / A

Pitch : 440-442 Hz

System : N° 1 standard Boehm (18 and 19 keys, 6 rings)

Barrels : 64 and 65 mm

Keywork : silver plated, with adjustable thumb rest

Finish : 100% natural wax

Rings : silver plated and matte black chromed

Pads : Gore-Tex, leather and cork

Included : Echo mouthpiece with silver plated ligature and cap, maintenance kit, PRISMe case (single or double).





# *F Clarinet*

## **BASSET HORN**

*"The little bass"*

Who wouldn't think of Mozart and his *Requiem* when considering this instrument that was also a favourite of Strauss and Massenet?

Previously bent in the middle, today's basset horn is straight in form and has a metal neck.

### **TECHNICAL FEATURES**

Key: F

Bore diameter: 15.8 mm

Pitch: 442 Hz

Range: to low C

System: Boehm (21 keys)

Materials : body in grenadilla wood, silver plated brass bell, silver plated nickel silver keywork, leather pads

Included: 2 necks, Concept mouthpiece with ligature and cap, non-slip adjustable peg, Light Basset horn case.



# Clarinet

## ALTO

Eb Alto clarinet 19A

The alto clarinet in Eb differs from other clarinets in its curved metal neck and bell, much like the basset horn.

It is a much sought-after instrument and is particularly appreciated in chamber music.

### TECHNICAL FEATURES

Key: Mib

Bore diameter: 17 mm

Pitch: 442

Range: down to low Eb

System: Boehm (18 keys)

Materials: silver plated nickel silver adjustable neck, body in grenadilla wood, silver plated bell, silver plated nickel silver keywork, leather pads

Included: alto Standard C\* mouthpiece with ligature and cap, non-slip adjustable peg, Light Alto case.





*Bass Clarinet*

## **LOW EB PRIVILEGE**

*THE sound of the bass clarinet*

The Privilège bass clarinet combines strikingly easy blowing and a round, warm sound that has gained in homogeneity and power.

Its versatility also enables real work on the sound imprint. Tuning is very much improved and balanced over all registers.

The overall ergonomics have evolved: easier keywork feels better under the fingers and allows a more natural and comfortable playing position. Its great responsiveness provides swiftness close to the B-flat and opens up a feeling of freedom.

Numerous technical improvements equally enhance the functioning of the instrument.

### **TECHNICAL FEATURES**

Key: Bb

Bore diameter: upper joint: 23.5 mm - lower joint: 23.4 mm

Neck: 1 small bent or 1 large bent

System : 19 keys, articulated G# , Eb lever, automatic octave key

Materials: silver plated nickel silver keywork, upper and lower joints in grenadilla wood, silver plated nickel silver bell, leather pads fitted with metal resonators

Included: Focus mouthpiece with ligature and cap, Pro-Light Eb Bass case.



*Bass Clarinet*

## **LOW C PRIVILEGE**

*Exceptional acoustics*

The Privilège bass clarinet combines strikingly easy blowing and a round, warm sound that has gained in homogeneity and power.

Its versatility also enables real work on the sound imprint. Tuning is very much improved and balanced over all registers.

The overall ergonomics have evolved: easier keywork feels better under the fingers and allows a more natural and comfortable playing position. Its great responsiveness provides swiftness close to the B-flat and opens up a feeling of freedom.

Numerous technical improvements equally enhance the functioning of the instrument.

### **TECHNICAL FEATURES**

Key : Bb

Bore diameter: upper joint: 23.5 mm, lower joint: 23.4 mm

Neck: 1 small bent or 1 large bent

Materials: silver plated nickel silver keywork, upper and lower joints in grenadilla wood, silver plated nickel silver bell, leather pads fitted with metal resonators

Finish: silver plated or matte black

Included: Focus mouthpiece with ligature and cap, Pro-Light Bass case.





*Clarinet*

## CONTRALTO

*The reference for the contralto clarinet*

E♭ Contralto clarinet 26

This clarinet draws all its charms from its superbly soft and deep register, giving it an exceptional range.

Its round and woody sound, thanks to its body made of rosewood, combined with its projection, makes it particularly appreciated in ensemble music.

### TECHNICAL FEATURES

Key: E♭

Bore diameter: 24.30 mm

Pitch: 442

Range: to low E♭

System: Boehm, 18 keys/7 rings, articulated G♯, E♭ lever, automatic octave key

Materials: silver plated nickel silver adjustable neck, body in Rio rosewood, silver plated nickel silver bell and keywork, leather pads fitted with metal resonators

Included: contralto Standard C\* mouthpiece with ligature and cap, non-slip adjustable peg, Light Contralto case.



*Clarinet*

## CONTRABASS

*The reference for the contrabass clarinet*

Bb Contrebass clarinet

The shape of this clarinet is what sets it apart from the rest of the family: folded back on itself, it is 2.31 meters long.

Made from metal and wood, it extends to an octave lower than the B-flat bass clarinet.



### TECHNICAL FEATURES

Key: Bb

Bore diameter: 33.90 mm

Pitch : 442

Range : to low C

Systeme: Boehm (18 keys/7 rings)

Materials: silver plated nickel silver adjustable neck, body in rosewood, silver plated nickel silver bell and keywork, leather pads fitted with metal resonators

Included: Contrabass Standard C mouthpiece with ligature and cap, non-slip adjustable peg, Light Contrabass case.





# EVOLUTION

*Présence*  
*Privilège*  
*Signature*  
*Recital*  
*Muse*

stability ♦ durability ♦ acoustic response







# Mouthpieces

## **A MAJOR HISTORIC ACTOR**

Over the years, many mouthpieces have marked history (Air flow, Soloist...). Today, the experience gained in the making of wind instruments is a further endorsement of the know-how of the Henri SELMER Paris House in the field of mouthpieces, the intimate knowledge of the instrument being the foundation for the design of a truly efficient mouthpiece.

A major accessory, Henri SELMER Paris offers a wide range of openings and tables for its mouthpieces (saxophones and clarinets). Each musician can thus, depending on their instrument, their morphological characteristics and their musical repertoire, obtain an optimum sound result.



an innovative  
mouthpiece



“I will entrust to you a precious companion! Inheritor of the great French tradition, the fruit of a rich culture of sound and of high technology, this mouthpiece will resonate with your energy on each and every stage.”

*C. Delangle*



Henri SELMER Paris  
designer and maker of wind instruments, mouthpieces and reeds since 1885

[selmer.fr](http://selmer.fr)



# The Henri SELMER Paris mouthpiece range



## MOUTHPIECES FOR SAXOPHONES



**S 80**

The reference for classic mouthpieces

Sopranino, soprano, alto, tenor, baritone, bass



**S 90**

A stable mouthpiece, reliable and versatile

Soprano, alto, tenor, baritone



*Soloist*

On the edge of jazz and classic

Alto, tenor



*Spirit*

A jazz mouthpiece with exceptional musical qualities

Alto



*Super Session*

Explore the full palette of the jazz colours

Soprano



*Prologue*

Ease of play and ease of emission

Alto



*C. Delange*

An innovative mouthpiece in acoustics and design

Alto



*Concept*

A model of high acoustic precision

Soprano, alto, tenor

## MOUTHPIECES FOR CLARINETS



*Focus*

The timbre and roundness with ease

Bb/A and bass



*Concept*

Wide sound, power and dynamics

Bb/A and bass



*Echo*

A round, colourful sound and an extreme ease of playing

Bb/A

Henri SELMER Paris

Designer and manufacturer of wind instruments and mouthpieces since 1885

# *Our range* **FOR SAXOPHONE**



## S 80

The S80 mouthpiece, considered the reference in mouthpieces, has gained an unprecedented level of popularity throughout the saxophone family. It is characterized by its very warm sound grain, a wide and ample tone.

- Available for sopranino, soprano, alto, tenor, baritone and bass saxophones.



## S 90

The S90 can be considered the universal mouthpiece. Producing a very direct, homogeneous sound with great flexibility and suppleness, this balanced mouthpiece will meet the needs of students and professionals alike. An efficient and responsive mouthpiece that produces excellent high notes.

- Available for soprano, alto, tenor and baritone saxophones.



## Concept

With its innovative and refined design the Concept mouthpiece perfectly reflects Henri SELMER Paris' philosophy, which has been committed to meeting the requirements of all musicians since 1885.

- Available for soprano, alto, and tenor saxophones.



## C. Delangle

This pioneering bi-material mouthpiece with its unique acoustic and sound properties has been designed in close collaboration with Claude Delangle, this mouthpiece perfectly reflecting his personality. The metal ring characteristic of Adolphe Sax's first mouthpieces and its cutaway design testify to a privileged relationship between tradition and the latest advances of the Concept family. The golden metal ring lines the entire bore and allows for a denser, fuller sound with increased projection.

- Disponible pour le saxophone alto.





## *Prologue*

---

From the very first notes, the Prologue mouthpiece is easy to play and its emission and response is second to none. These qualities, as well as its attractive price, make it a great choice for beginner saxophonists.

Drawing on our extensive know-how, a new material has been chosen for the Prologue design: TPE, a thermoplastic polymer. This material offers outstanding acoustic qualities, similar to the hard rubber used in the conception of the Henri SELMER Paris mouthpieces, as well as a perfect repeatability in production.

► Available for the alto saxophone.



## *Soloist*

---

Directly inspired by the legendary model made during the Fifties, the Soloist embodies all the qualities which originally made it so successful: a rich, easily modulated sound, it remains centred, homogeneous and warm across the spectrum of playing styles. It delivers a high degree of accuracy, particularly in the attack of the low notes and on the highest notes. These qualities are particularly noted for their stability across all playing styles.

► Available for alto and tenor saxophones.



## *Spirit*

---

Designed together with Pierrick Pedron, one of the most prominent French Jazz players, the new Selmer Paris Alto saxophone Jazz mouthpiece offers outstanding musical qualities. Machined from a high quality hard rubber bar, an exclusive Selmer Paris process. A great sound: a full spectrum, very rich in low harmonics though keeping a real "cutting through" power.

Remarkable enough, the global tone colour remains in its entirety on all registers, specially for the medium register which usually has a trend to loose texture in that kind of mouthpiece conception, a noticeable advantage for recording. A well-balanced tuning and easy control provide a rarely reached playing comfort on a Jazz mouthpiece. An easy blowing mouthpiece with an excellent articulation (detached notes).

Spirit, the must-have of the jazz mouthpiece!

► Available for alto saxophone.



## *Super Session*

---

The Super Session for soprano is a mouthpiece that is easy to play and allows real work on colour. A sound that remains stable regardless of the dynamic levels, an astonishing richness of sound, without aggressiveness.

More specifically designed for jazz, this mouthpiece meets the aspirations of musicians looking for power, projection, wide dynamics and flexibility.

► Available for the soprano saxophone.

# Our range

## FOR CLARINET



### C85

The C85 has a large sound, rich in low overtones; combining with subtlety power and roundness.

► Available for the Eb clarinet.



### Echo

Developed in close collaboration with leading experts, the Echo mouthpiece is universal making it suitable for all clarinetists.

With a round and colourful sound combined with extreme ease of play, it allows musicians to forget their instrument and focus entirely on the music.

► Available for the Bb and A clarinets.



### Focus

Its closer opening improves control of the playing and provides great flexibility over the entire range. The ideal distribution of its volumes facilitates the natural vibration of the sound.

► Available for the Bb/A and bass clarinets.





## *Concept*

The perfect balance between tone and roundness will seduce you as well as its playability. Developed with the greatest clarinet experts, these mouthpieces will accompany you in all your musical settings. Concept has a large opening offering power and dynamics with an ample sound over the whole registers.

- Available for Bb/A and bass clarinets.



## **STANDARD C\***

A very popular series all over the world, played by professional clarinet players as well as students and amateurs.

- Available for alto, contralto and contrabass clarinets.



# TABLE OF SAXOPHONES

Model	Available finish	Included accessories	Page
SUPER ACTION 80 SERIE II SOPRANINO	Lacquered, silver plated	Henri SELMER Paris S80 C* mouthpiece with ligature and cap, Light case, maintenance kit	P. 51
SUPER ACTION 80 SERIE II SOPRANO	Lacquered, silver plated, black	Henri SELMER Paris S80 C* mouthpiece with ligature and cap, Light case, maintenance kit	P. 50
SERIE III SOPRANO	Lacquered, silver plated, black, brushed, solid silver, gold plated	Henri SELMER Paris S80 C* mouthpiece with ligature and cap, Light case, maintenance kit	P. 50
AXOS ALTO	Colourless lacquer	Henri SELMER Paris S80 C* mouthpiece with ligature and cap, Light case, maintenance kit	P. 51
SUPER ACTION 80 SERIE II ALTO	Lacquered, silver plated, black, brushed, gold plated	Henri SELMER Paris S80 C* mouthpiece with ligature and cap, Light case, maintenance kit	P. 50
SUPREME ALTO	Lacquered, silver plated, black, brushed, solid silver, gold plated, Antiqued lacquer	Henri SELMER Paris Concept mouthpiece (with ligature and cap), alto Supreme case, Supreme neck strap, silk/microfibre cloth, body swab, neck swab, cork grease	P. 50
AXOS TENOR	Exclusive Axos gold lacquer	Henri SELMER Paris S80 C* mouthpiece with ligature and cap, Light case, maintenance kit	P. 50
SUPER ACTION 80 SERIE II TENOR	Lacquered, silver plated, black, brushed, gold plated	Henri SELMER Paris S80 C* mouthpiece with ligature and cap, Light case, maintenance kit	P. 50
SERIE III TENOR	Lacquered, silver plated, black, brushed, solid silver, gold plated	Henri SELMER Paris S80 C* mouthpiece with ligature and cap, Light case, maintenance kit	P. 50
REFERENCE 36 TENOR	Lacquered, Antiqued lacquer	Henri SELMER Paris S80 C* mouthpiece with ligature and cap, Reference case, maintenance kit	P. 50
REFERENCE 54 TENOR	Lacquered, Antiqued lacquer	Henri SELMER Paris S80 C* mouthpiece with ligature and cap, Reference case, maintenance kit	P. 50
SUPER ACTION 80 SERIE II BARITONE IN A	Lacquered, silver plated, black, brushed	Henri SELMER Paris S80 C* mouthpiece with ligature and cap, Flight case,	P. 50
SERIE III BARITONE	Lacquered, silver plated, black, brushed	Henri SELMER Paris S80 C* mouthpiece with ligature and cap, Flight case, maintenance kit	P. 50
SUPER ACTION 80 SERIE II BASS	Lacquered, silver plated	Henri SELMER Paris S80 C* mouthpiece with ligature and cap, Light case, maintenance kit	P. 50

# TABLE OF CLARINETS

Model	Available finish	Included accessories	Page
RECITAL EB	Silver plated keywork	Henri SELMER Paris Eb C85 mouthpiece, ligature, cap, maintenance kit, Light case	P. 52
PROLOGUE BB	Silver plated keywork	Henri SELMER Paris Focus mouthpiece, ligature, cap, maintenance kit, Prologue case	P. 52
PRÉSENCE BB/A	Silver plated or matte black keywork	Henri SELMER Paris Concept mouthpiece, ligature, cap, maintenance kit, Présence case	P. 53
PRIVILÈGE BB/A	Silver plated or matte black keywork	Henri SELMER Paris Concept mouthpiece, ligature, cap, maintenance kit, PRiSMe case	P. 53
RECITAL BB/A	Silver plated or matte black keywork	Henri SELMER Paris Concept mouthpiece, ligature, cap, maintenance kit, PRiSMe case	P. 53
SIGNATURE BB/A	Silver plated or matte black keywork	Henri SELMER Paris Concept mouthpiece, ligature, cap, maintenance kit, PRiSMe case	P. 53
MUSE BB/A	Silver plated keywork	Henri SELMER Paris Echo mouthpiece, silver plated ligature and cap, maintenance kit, PRiSMe case (single or double)	P. 52
BASSET HORN	Silver plated keywork	Henri SELMER Paris C85 120 mouthpiece, ligature, cap, maintenance kit, Light case	P. 53
ALTO	Silver plated keywork	Henri SELMER Paris Standard C* mouthpiece, ligature, cap, maintenance kit, Light case	P. 53
PRIVILÈGE LOW C BASS	Silver plated or matte black keywork	Henri SELMER Paris Focus mouthpiece, ligature, cap, maintenance kit, Pro-Light case	52
PRIVILÈGE LOW EB BASS	Silver plated or matte black keywork	Henri SELMER Paris Focus mouthpiece, ligature, cap, maintenance kit, Pro-Light case	P. 52
CONTRALTO	Silver plated or matte black keywork	Henri SELMER Paris Standard C* mouthpiece, ligature, cap, maintenance kit, Light case	P. 53
CONTRABASS	Silver plated	Henri SELMER Paris Standard C* mouthpiece, ligature, cap, maintenance kit, Light case	P. 53



# TABLE OF MOUTHPIECES

Model	Instrument	Table opening	Table length	Page
S80	SOPRANINO SAXOPHONE	C* (1.10 mm), D (1.20 mm)	18 mm	P. 50
SUPER SESSION	SOPRANO SAXOPHONE	E (1.35 mm), F (1.45 mm), G (1.55 mm), H (1.65 mm)	24 mm	P. 51
CONCEPT	SOPRANO SAXOPHONE	1.06 mm	21 mm	P. 50
S90	SOPRANO SAXOPHONE	170 (1.07 mm), 180 (1.12 mm), 190 (1.17 mm), 200 (1.22 mm)	18 mm	P. 50
S80	SOPRANO SAXOPHONE	C* (1.17 mm), C** (1.22 mm), D (1.27 mm), E (1.32 mm), F (1.37 mm)	18 mm	P. 50
S80	ALTO SAXOPHONE	C (1.45 mm), C* (1.55 mm), C** (1.65 mm), D (1.75 mm), E (1.85 mm), F (1.95 mm), G (2.05 mm)	24 mm	P. 50
S90	ALTO SAXOPHONE	170 (1.35 mm), 180 (1.45 mm), 190 (1.55 mm), 200 (1.65 mm)	24 mm	P. 50
CONCEPT	ALTO SAXOPHONE	1.52 mm	24 mm	P. 50
C. DELANGLE	ALTO SAXOPHONE	1.65 mm	24 mm	P. 50
PROLOGUE	ALTO SAXOPHONE	1.55 mm	14 mm	P. 51
SOLOIST	ALTO SAXOPHONE	C* (1.55 mm), C** (1.65 mm), D (1.75 mm), E (1.85 mm), F (1.95 mm), G (2.05 mm)	24 mm	P. 51
SPIRIT	ALTO SAXOPHONE	184 (1.84 mm), 210 (2.10 mm)	27 mm	P. 50
S80	TENOR SAXOPHONE	C* (1.90 mm), C** (2.00 mm), D (2.10 mm), E (2.20 mm), F (2.30 mm)	23 mm	P. 50
S90	TENOR SAXOPHONE	170 (1.70 mm), 180 (1.80 mm), 190 (1.90 mm), 200 (2.00 mm)	23 mm	P. 50
CONCEPT	TENOR SAXOPHONE	2,10 mm	27 mm	P. 50
SOLOIST	TENOR SAXOPHONE	C* (1.90 mm), C** (2.00 mm), D (2.10 mm), E (2.20 mm), F (2.30 mm), G (2.40 mm)	23 mm	P. 51
S90	BARITONE SAXOPHONE	170 (1.85 mm), 180 (1.95 mm), 190 (2.05 mm), 200 (2.15 mm)	27 mm	P. 50
S80	BARITONE SAXOPHONE	C* (2.05 mm), C** (2.15 mm), D (2.25 mm), E (2.35 mm), F (2.45 mm)	27 mm	P. 50
S80	BASS SAXOPHONE	C* (2,10 mm)	30 mm	P. 50

Model	Instrument	Table opening	Table length	Page
C85	EB CLARINET	1.10 or 1.15 mm	-	P. 52
ECHO	BB/A CLARINETS	1.08 mm	22 mm	P. 50
FOCUS	BB/A CLARINETS	1.05 mm	23 mm	P. 52
CONCEPT	BB/A CLARINETS	1.10 mm	23 mm	P. 53
STANDARD C*	ALTO CLARINET	1.30 mm	23 mm	P. 53
FOCUS	BASS CLARINET	1.90 mm	32 mm	P. 52
CONCEPT	CLARINETTE BASSE	2.15 mm	32 mm	P. 53
STANDARD C*	CONTRALTO CLARINET	1.86 mm	27 mm	P. 53
STANDARD C*	CONTRABASS CLARINET	1.90 mm	30 mm	P. 53



UNEQUALLED ACOUSTIC PRECISION, DESIGNED BY MUSICIANS FOR MUSICIANS



*Echo*

Bec pour clarinettes sib & la  
Mouthpiece for Bb & A clarinets



Henri SELMER Paris  
Designer and manufacturer of wind instruments and mouthpieces since 1885

  
selmer.fr





*Les échos du son selon Selmer*

**BEYOND THE SOUND**





Designer and manufacturer of wind instruments and mouthpieces since 1885



MADE IN FRANCE

[selmer.fr](http://selmer.fr)